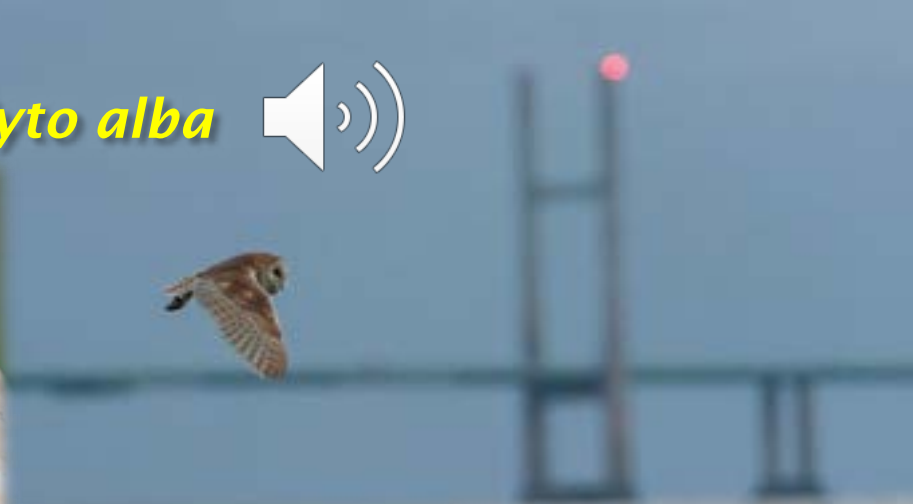


# *The Barn Owl, Tyto alba*







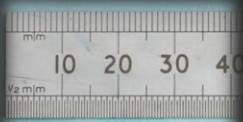
***Barn Owl Chicks***





# Owl development

## Barn Owl Chicks



30/32



3/7



3-9/7



19/7



23/7



32/7



42/7



43/7



48/7



98/7



10/12



*The Tawny Owl , Strix aluco*



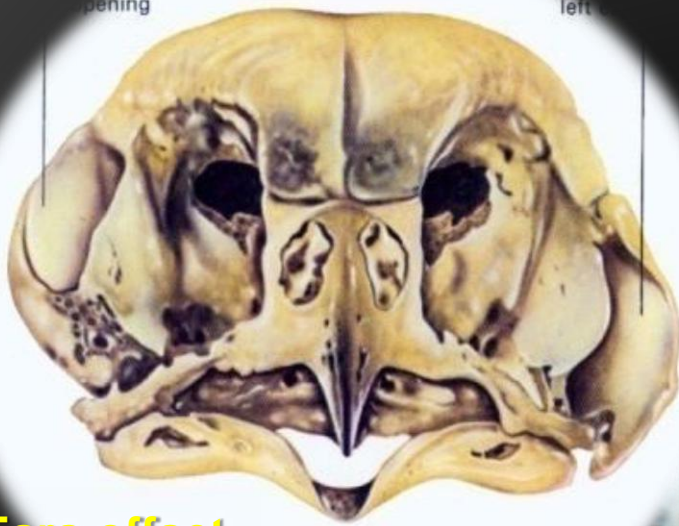




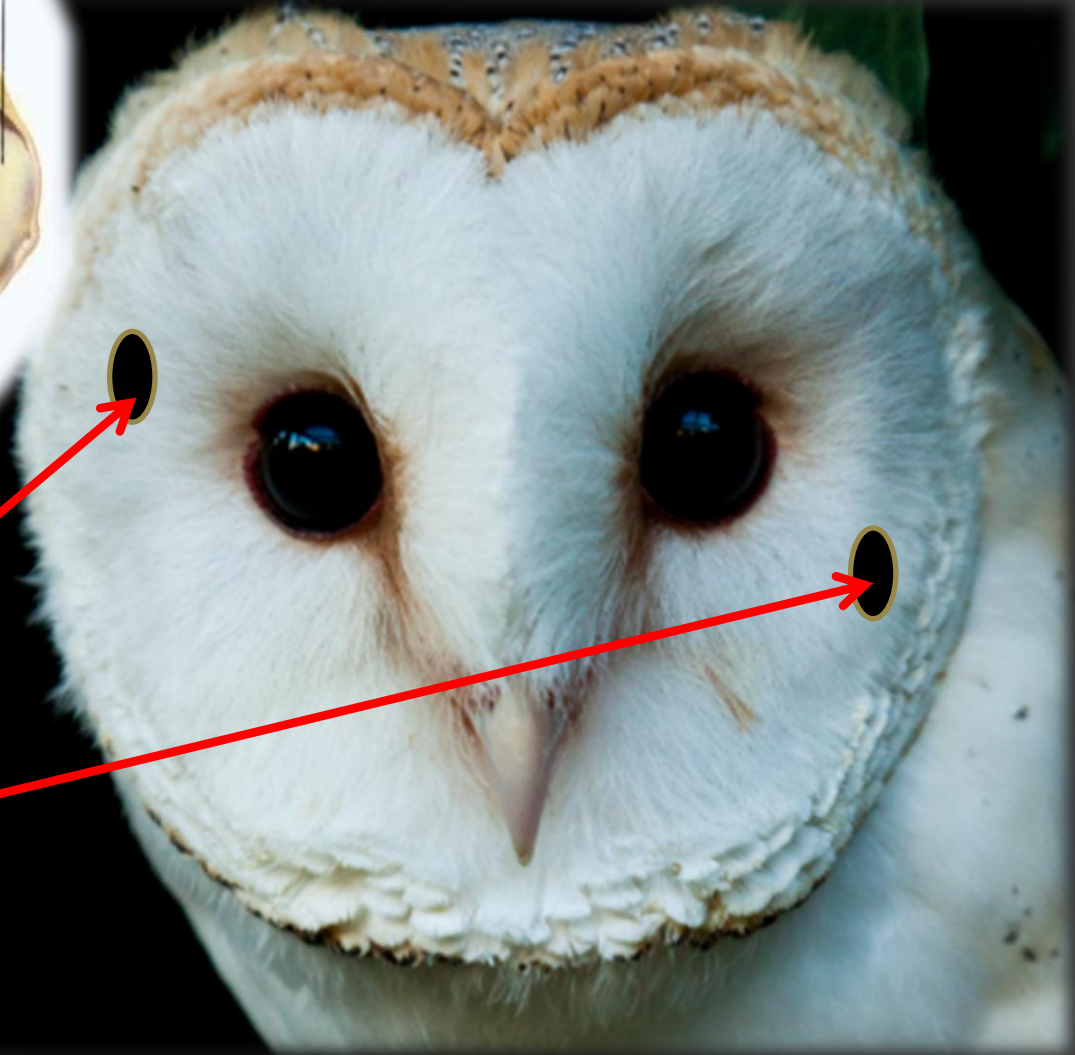
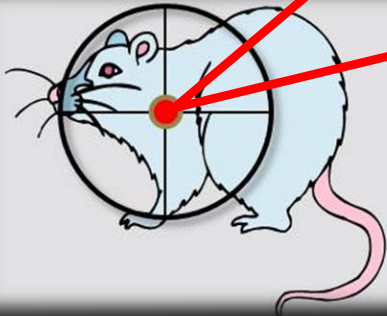
***Tawny Owl Chicks***



# Ears



- ❖ Ears offset
- ❖ Facial Disc
- ❖ Focus on prey
- ❖ Acute hearing
- ❖ Large auditory area of brain





# *Feathers*

Functions of feathers include

- Flight
- Stealth
- Insulation
- Waterproofing
- Camouflage
- Identification of sex











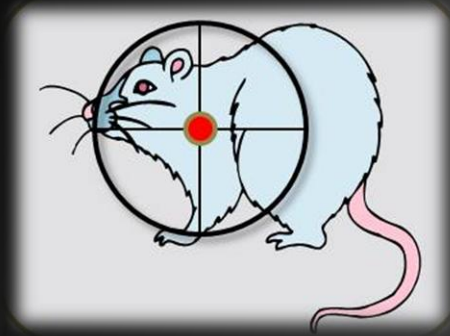
# Eyes





# Talons

The main **killing tool** of the Owl and are **needle sharp**





# ***Hunting***

*Listen, Look, Catch, Carry and Eat*



***Listen***



***Look and Fly Silently***





*Catch*

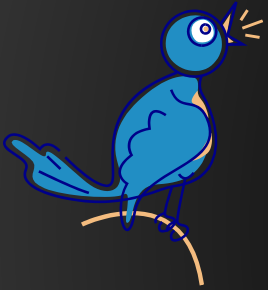
*Kill!*

*EAT!*

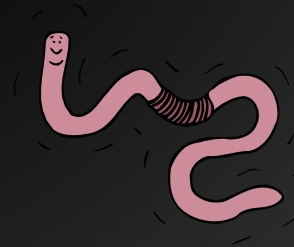




# Prey



- ❖ Small Mammals e.g. mice, voles , shrews, rats, rabbits
- ❖ Birds
- ❖ Frogs and newts
- ❖ Beetles and worms
- ❖ Reptiles e.g. lizards and snakes





# ***Pellets and Poo!***

Owls find bones, claws, beaks insect wing cases and feathers indigestible and expel a pellet from their stomach on a near daily basis

- ❑ Prey animal identification
- ❑ Small mammal distribution

